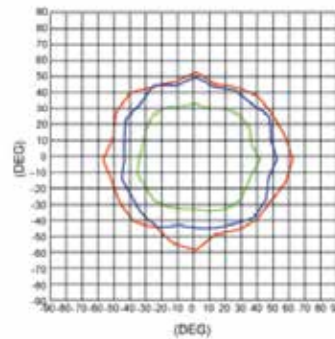
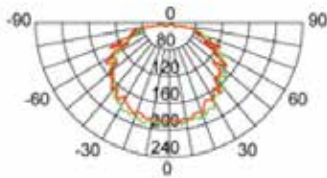
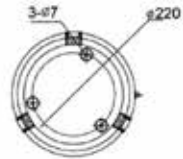
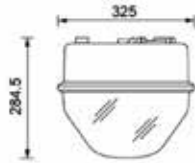




**CLO Series-4**

**Technical Specification**

35W/45W  
 Lumen: 3780 LM / 4760 LM /  
 2700 LM / 3400 LM  
 Beam Angle: 130°  
 Movable Angle: Fixed  
 Power Factor: >0.95PF  
 Operating Temperature: -20~+45°  
 Light Source: LED  
 Aluminium die cast body  
 PC diffuser



Model	Power	Input Voltage	Frequency	Color Temperature	CRI	Light Efficiency
CLS-35- YS134	35W	AC100 V~240 V	50~60 Hz	4000 / 5000 / 6000 K	>70RA	85LM/ W
CLS-45- YS134	45W					75LM/ W